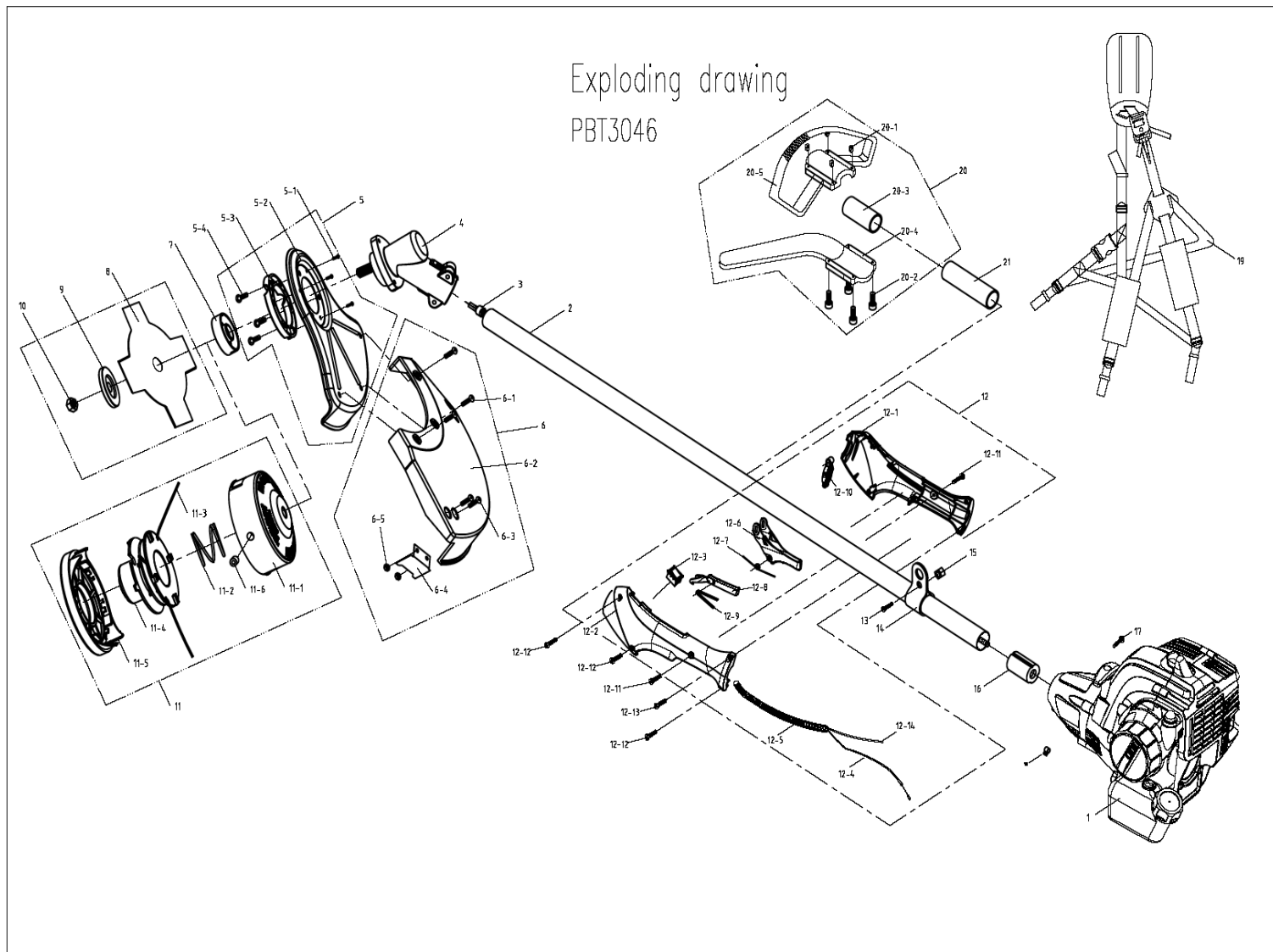


ITEM	PART NUMBER	PART DESCRIPTION	INTERNAL CODE	Qty PER PRODUCT
1	CLVDB0241	AIR FILTER ASS'Y	TE25HA.44.00	1
1-1	CLVDB0250	HANDSPIKE	TE25HA.44.12	1
1-2	CLVDB0544	SPRING 1	TOTHYY.02.04	1
1-3	CLVDB0245	AIR FILTER LID 1	TE25HA.44.04	1
1-4	CLVDB0248	SPONGE 1	TE25HA.44.07	1
1-5	CLVDB0247	SPONGE 2	TE25HA.44.06	1
1-6	CLVDB0206	NUT	BOB1LM.05.01	2
1-7	CLHT2660A130	AIR FILTER SPACER	TE25HA.44.08	2
1-8	CLVDB0244	AIR FILTER LID 2	TE25HA.44.03	1
1-9	CLVDB0246	SPRING 2	TE25HA.44.05	1
1-10	CLVDB0243	AIR FILTER KNOB	TE25HA.44.02	1
1-11	CLVDB0160	SCREW 4*15	BOA2SP.40.15	1
1-12	CLVDB0242	AIR FILTER PEDESTAL	TE25HA.44.01	1
1-13	CLVDB0249	HANDSPIKE	TE25HA.44.11	1
1-14	CLVDB0251	PIN	TE25HA.44.14	1
1-15	CLVDB0197	TAPPING SCREW M4*12	BOA2ZZ.04.12	4
1-16	CLVDB0519	NUT	TE25HA.44.99	2

ITEM	PART NUMBER	PART DESCRIPTION	INTERNAL CODE	Qty PER PRODUCT
2	CLVDB0506	CARBURETOR	TE25HA.45.01	1
3	CLVDB0413	CARBURETOR GASKET	TE25HA.40.03	1
4	CLVDB0237	CARBURETOR SEAT	TE25HA.40.02	1
5	CLVDB0195	BOLT M5*68	BOA1ZZ.05.68	2
6	CLVDB0003	BOLT M5*25	BOA4LS.05.25	2
7	CLVDB0236	INLET GASKET	TE25HA.40.01	1
8	CLVDB0260	SPARK PLUG	TE25HA.63.00	1
9	CLPBV30F131	CYLINDER	TE30HC.00.01	1
10	CLVDB0234	GASKET OF CYLINDER	TE25HA.30.02	1
11	CLVDB0878	PISTON ASS'Y	TE30HA.13.00	1
11-1	CLVDB0290	PISTON RING	TE30HC.00.03	2
11-2	CLVDB0289	PISTON	TE30HC.00.02	1
11-3	CLVDB0291	PISTON PIN	TE30HC.00.04	1
11-4	CLVDB0230	PISTON PIN RETAINER	TE25HA.13.03	2
12	CLVDB0228	ROB ASS'Y	TE25HA.12.00	1
12-1	CLVDB0572	NEEDLE BEARING 8*12*10	BOR1TZ.08.12.10	1
12-2	CLVDB0229	ROB	TE25HA.12.01	1
12-3	CLVDB0224	NEEDLE BEARING 9.5*14.3	BOR1TZ.09.13	1
13	CLVDB0233	GASKET OF CRANK CASE	TE25HA.20.03	1
14	CLVDB0231	CRANK CASE ASS'Y	TE25HA.20.00	1
14-1	CLVDB0232	CRANK CASE	TE25HA.20.01	1
14-2	CLVDB0221	BALL BEARING 6201	BOP5SG.12.10	1
14-3	CLVDB0338	OIL SEAL TC28*12*7	WEQTMF.12.07	1
14-4	CLVDB0220	BALL BEARING 6001LLU	BOP5SG.12.08	1
14-5	CLVDB0227	CRANK SHAFT ASSEMBLY	TE25HA.11.10	1
15	CLVDB0574	BOLT M6*20	BOA4LS.06.20	3
16	CLVDB0253	EXHAUST GASKET	TE25HA.50.01	1
17	CLVDB0261	WIRE	TE25HA.64.00	1
18	CLVDB0575	WASHER 10	BOC1ZZ.8E.2C	1
19	CLVDB0576	TUBE	TE25HA.11.03	1
20	CLVDB0265	STARTER RETAINER	TE25HA.70.06	1
21	CLVDB0262	STARTER WHEEL	TE25HA.70.02	1
22	CLVDB0263	STARTER ROPE	TE25HA.70.03	1
23	CLVDB0578	SPRING ASS'Y	TE25HA.71.00	1
24	CLVDB0258	FLYWHEEL	TE25HA.61.00	1
25	CLVDB0856	HEAT PROTECTING FILM	TE25HA.91.06	1
26	CLVDB0003	CROSSHEAD SCREW M5*25	BOA4LS.05.25	4
27	CLVDB0845	CLUTCH DRIVER	TE25HB.11.22	1
28	CLVDB0879	NESTING	TE25HA.91.07	1
29	CLVDB0287	CLUTCH DISC	TE25HB.11.21	1
30	CLHT2660A125	STARTER HANDLE	TE33FA.74.06	1
31	CLVDB0205	COACH NUT M5	BOB1LM.05.00	2
32	CLVDB0286	CLUTCH COVER	TE25HA.93.01	1
33	CLVDB0002	BOLT M5*20	BOA4LS.05.20	2
34	CLVDB0198	BOLT M5*28	BOA2ZZ.05.28	4
35	CLVDB0284	BACK COVER	TE25HA.92.01	1
36	CLVDB0160	SCREW M4*15	BOA2SP.40.15	3
37	CLVDB0633	FUEL TANK ASS'Y	TE25HA.84.00	1

ITEM	PART NUMBER	PART DESCRIPTION	INTERNAL CODE	Qty PER PRODUCT
37-1	CLVDB0581	FUEL TANK	TE25HA.84.01	1
37-2	CLVDB0270	FUEL TANK CUSHION	TE25HA.80.03	3
37-3	CLVDB0272	WALLPAPER	TE25HA.81.02	1
37-4	CLVDB0319	OIL PIPE SEAT	TE33FA.81.02	1
37-5	CLVDB0539	OIL PIPE	TE25HA.80.02.01	1
37-6	CLVDB0281	OIL FILTER 1	TE25HA.83.00	1
37-7	CLVDB0541	OIL PIPE	TE25HA.80.02.02	1
38	CLVDB0062	TANK COVER ASS'Y	TE33FA.81.10	1
39	CLVDB0003	BOLT M5*25	BOA4LS.05.25	2
40	CLVDB0002	BOLT M5*20	BOA4LS.05.20	4
41	CLVDB0255	EXHAUST	TE25HA.51.00	1
42	CLVDB0582	EXHAUST MANTLE	TE25HA.52.01	1
43	CLVDB0254	EXHAUST RETAINER	TE25HA.50.03	1
44	CLVDB0202	BOLT M6*55	BOA4LS.06.55	2
45	CLVDB0259	LGNITION APPARATUS	TE25HA.62.00	1
46	CLVDB0579	GASKET	TE25HB.11.23	1

maj 140414



ITEM	PART NUMBER	PART DESCRIPTION	INTERNAL CODE	Qty per PRODUCT
1	CLVDB0844	ENG ASY	TE30HF.00.00	
2	CLVDB0498	PIPE FRONT ASY	EA20BC.20.00	1
3	CLVDB0847	SHAFT FLEX ASY	EA20BC.21.00	1
4	CLVDB0136	HOLDER	EA01BC.30.00	1
5	CLVDB0592	GUARD ASY	EA01BC.42.00	1
5-1	CLVDB0593	SCREW	BOA2SP.40.10	3
5-2	CLVDB0594	GUARD	EA01BC.40.04	1
5-3	CLVDB0595	GUARD HOLDER	EA01BC.40.05	1
5-4	CLVDB0596	SCREW	EA01BC.40.06	3
6	CLVDB0597	GUARD ASY	EA01BC.41.00	1
6-1	CLVDB0598	SCREW	EA01BC.40.07	3
6-2	CLVDB0142	GUARD	EA01BC.40.02	1
6-3	CLVDB0340	SCREW	BOA1SP.50.15	2
6-4	CLVDB0143	STRING CUTTER	EA01GT.70.02	1
6-5	CLVDB0140	NUT	BOB2FQ.05.1X	2
7	CLVDB0144	RING	EA01BC.00.01	1
8	CLVDB0501	BLADE BRUSH 4 TOOTH	EA50BC.00.02	1
9	CLVDB0146	FLANG SPINDLE	EA01BC.00.03	1
10	CLVDB0599	NUT	EA01BC.00.05	1

ITEM	PART NUMBER	PART DESCRIPTION	INTERNAL CODE	Qty per PRODUCT
11	CLVDB0148	KIT,STRING HEAD	EA01BC.50.00	
11-1	CLVDB0149	STRING BOX ASY	EA01BC.51.00	1
11-2	CLVDB0150	SPRING	EA01BC.50.01	1
11-3	CLVDB0510	STRING	EA01BC.00.17	1
11-4	CLVDB0152	INNER SPOOL	EA01BC.50.02	1
11-5	CLVDB0153	INNER SPOOL LID	EA01BC.50.03	1
11-6	CLVDB0511	NUT	EA01BC.51.01	2
12	CLVDB0603	HANDLE ASY	TE25HA.95.00	1
12-1	CLVDB0604	RIGHT HANDLE	TE25HA.95.32	1
12-2	CLVDB0605	LEFT HANDLE	TE25HA.95.31	1
12-3	CLVDB0427	STOP SWITCH	TE25HA.94.13	1
12-4	CLVDB0606	THROTTLE CABLE	TE25HA.95.11	1
12-5	CLVDB0607	HOSE	TE25HA.94.14	1
12-6	CLVDB0608	TRIGGER	TE25HA.95.22	1
12-7	CLVDB0609	SPRING	TE25HA.95.24	1
12-8	CLVDB0610	LIBERATE SHAFT	TE25HA.95.21	1
12-9	CLVDB0611	SPRING	TE25HA.95.25	1
12-10	CLVDB0612	LIBERATE CHUNK	TE25HA.95.23	1
12-11	CLVDB0601	SCREW	BOA1SP.50.08	2
12-12	CLVDB0160	SCREW	BOA2SP.40.15	3
12-13	CLVDB0613	SCREW	BOA2ZZ.39.11	1
12-14	CLVDB0614	WIRE	TE25HA.94.12	1
13	CLVDB0615	SCREW	BOA1SP.50.08.BX	1
14	CLVDB0189	HAMESS RING	EA01GT.00.05	1
15	CLVDB0502	NUT	BOB1LH.05.BZ	1
16	CLVDB0360	DAMPING RUBBER	EA01GT.00.08	1
17	CLVDB0343	SCREW	BOA2SP.50.15	1
18	CLVDB0762	CLAMP	TE25HA.14.16	1
19	CLVDB0191	HAMESS	EA02BC.00.01	1
20	CLVDB0585	HANDLE ASY	EA50BC.10.00	
20-1	CLVDB0140	NUT	BOB2FQ.05.1X	4
20-2	CLVDB0201	SCREW	BOA4LS.05.30	4
20-3	CLVDB0588	DAMPING RUBBER	EA50BC.10.03	1
20-4	CLVDB0589	CENTERPIECE	EA50BC.10.02	1
20-5	CLVDB0590	HANDLE	EA50BC.10.01	1
21	CLVDB0361	TUBE COVER	EA01GT.00.13	1
		maj140414		