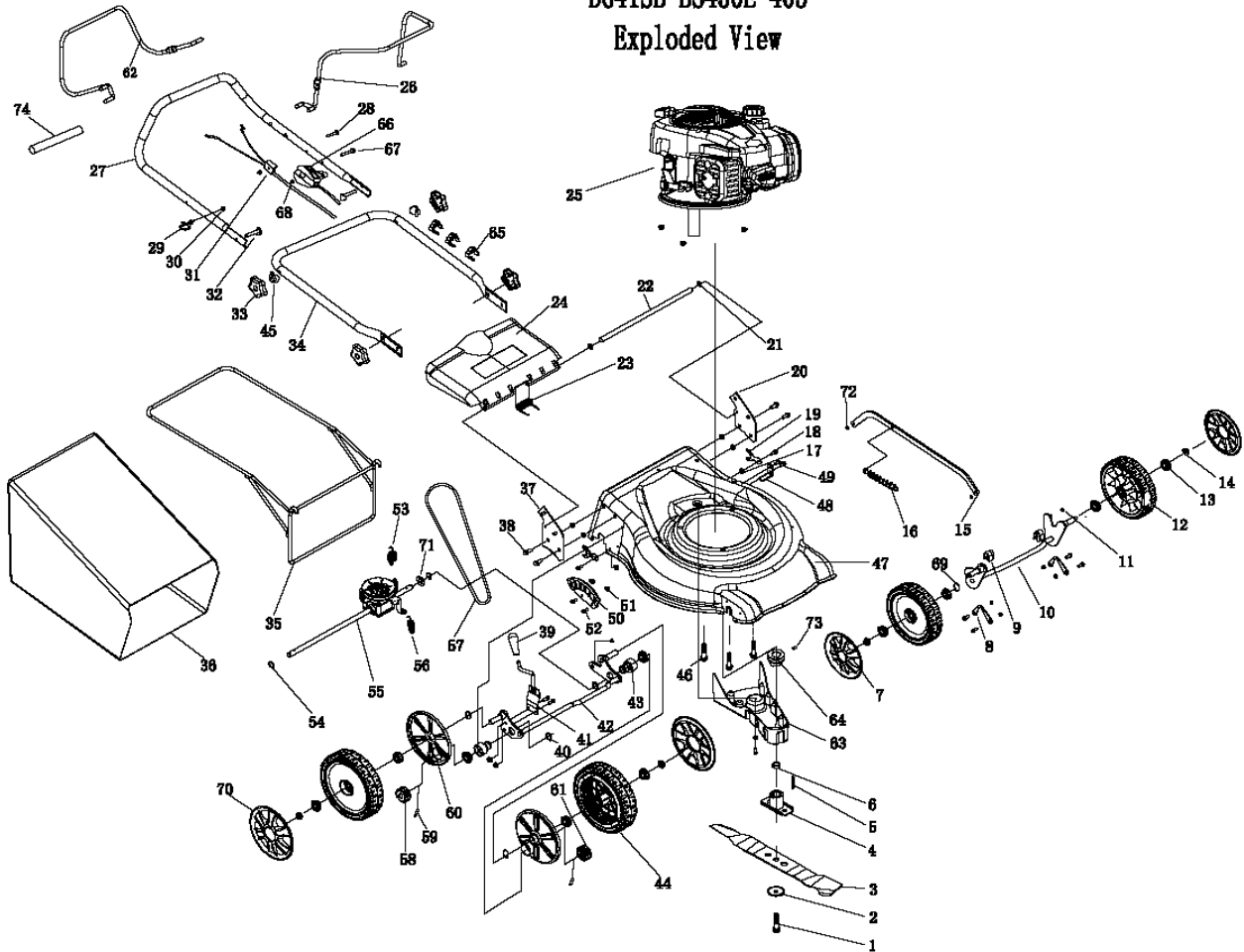


LAWN-KING LK41 SP WITH B&S 450 E
 Réf: TOT911307 Gencod 370016911307

DG41SB-BS450E-405 Exploded View



ITEM	PART NUMBER	DESCRIPTION	INTERNAL CODE	QTY PER PRODUCT
		DG41SB-BS450E		
1	CLD22010106	BLADE BOLT	D22010106	1
2	CLD21100026	DISH WASHER	D21100026	1
3	CLD21080152	BLADE	D21080152	1
4	CLD21090011	BLADE BASE	D21090011	1
5	CLD22010200	KEY	D22010200	1
6	CLD22010071	BLADE INSERT 22,2X8	D22010071	1
7	CLD23011030	INSIDE FRONT WHEEL COVERS	D23011030	2
8	CLD21100201	FRONT WHEEL SHAFT FIXED PLATE	D21100201	2
9	CLD23011120	FRONT WHEEL SHAFT CLAMP	D23011120	2
10	CLD21020284	FRONT AXLE	D21020284	1
11	CLGB6182M6	NUT M6	GB/6182/M6	2
12	CLD23011230	6 INCH WHEEL ASSEMBLY	D23011230	2
13	CLD21100061	PRESSING BEARING	D21100061	2
14	CLGBT6187M8	METAL HEX NUT M8	GB/T6187/M8	11
15	CLD21030104	BAR SET	D21030104	1
16	CLD21070041	PULL BACK SPRING	D21070041	1
17	CLGBT6187M6	NUT M6	GB/T6187/M6	5
18	CLGB5789M6	BOLTS	GB5789/M6X14	5
19	CLD21100016	AXLE LIMITED PLATE	D21100016	2
20	CLD21050264	LEFT ARMREST BRACKET	D21050264	1

DG41SB-BS450E				
ITEM	PART NUMBER	DESCRIPTION	INTERNAL CODE	QTY PER PRODUCT
21	CLGB89686D4	BOCKING CIRCLE D4	GB896-86/D4	2
22	CLD22010241	AXIS DEFLECTEUR	D22010241	1
23	CLD21070101	TWIST SPRING FOR REAR COVER	D21070101	1
24	CLD23010510	DEFLECTEUR	D23010510	1
25	BS450E	ENGINE DETAILED	BS450E	1
26	CLD21070152	ON/OFF POLE	D21070152	1
27	CLD21060012	UPPER HANDLE	D21060012	1
28	CLGBT5789M6X35	HEX FLANG BOLT M6X35	GB/T5789/M6X35	1
29	CLD21070332	HOOK STRING LAUNCHER	D21070332	1
30	CLGB617786	NUT	GB6177-86	1
31	CLD26010170	CABLE AND TRACTION ENGINE BRAKE	D26010170	1
32	CLD22010091	BOLTS	D22010091	2
33	CLD23010370	KNOB	D23010370	4
34	CLD21060212	LOW HANDLE	D21060212	1
35	CLD21070392	FRAME BAC	D21070392	1
36	CLD23050110	BAC FLEXIBLE	D23050110	1
37	CLD21050274	RIGHT ARMREST BRACKET	D21050274	1
38	CLGBT801M8X16	ROUND HEAD SQUARE NECK BOLTS	GB/T801/M8X16	4
39	CLD23010200	BALL HANDLE	D23010200	1
40	CLGBT8941	RING	GB/T894.1	2
41	CLD21040064	HANDLE ASSEMBLY	D21040064	1
42	CLD21020344	REAR AXLE	D21020344	1
43	CLD22030030	BEARING BUSH	D22030030	2
44	CLD23010030	8 INCH WHEEL ASSEMBLY	D23010030	2
45	CLD23010380	KNOB BLOCK	D23010380	2
46	CLGBT5789M8X30	HEX FLANG BOLT M6X35	GB/T5789/M8X30	3
47	CLD21010262	MOWING DISC ASSEMBLY	D21010262	1
48	CLD21100241	PLATE	D21100241	1
49	CLGBT5789M6X8	HEX FLANG BOLT M6X8	GB/T5789/M6X8	2
50	CLD21050101	RACK	D21050101	1
51	CLGB6187M5	NUT M5	GB6187/M5	6
52	CLGB5789M5X12	HEXAGON FLANGE BOLTS	GB5789/M5X12	6
53	CLD21070061	ON AND OFF PULL SPRING	D21070061	1
54	CLGBT8941	RING	GB/T894.1	2
55	CLD26040050	BOX WHEEL	D26040050	1
56	CLD21070071	DRIVE PULL SPRING	D21070071	1
57	CLGB11544Z710	BELT Z710	GB11544/Z710	1
58	CLD22030020	RIGHT RATCHET	D22030020	1
59	CLD22010190	PIN D5X21.5	D22010190	2
60	CLD23010090	8 INCH OF DUST ROUND COVER	D23010090	2
61	CLD22030010	LEFT RATCHET	D22030010	1
62	CLD21070322	TRACTION LEVER	D21070322	1
63	CLD23010150	BELT COVER	D23010150	1
64	CLD22010051	DRIVE BELT WHEEL	D22010051	1
65	CLD23010390	WIRE CLIP	D23010390	3
66	CLD26010410	THROTTLE CABLE ASSEMBLY	D26010410	1
67	CLGBT5789M6X45	HEX FLANG BOLT M6X45	GB/T5789/M6X45	1
68	CLGB923M6	CAP NUT M6	GB923/M6	2
69	CLD21100131	CORRUGATED GASKET 13X20X0.3	D21100131	4
70	CLD23011050	8 INCH WHEEL COVER	D23011050	2
71	CLGBT96D13X20X2	FLAT WASHER D13X20X2	GB/T96/D13X20X2	2
72	CLGBT96X16X1	NUT	GB/T96/8X16X1	2
73	CLGB80M6X8	SCREW (with pulley CLD22010051	GB 80/M6X8	1
74	CLD23050050	PUSH ROD SPONGE	D23050050	1
75	CLD21100301	KIT ASSEMBLY	D21100301	1