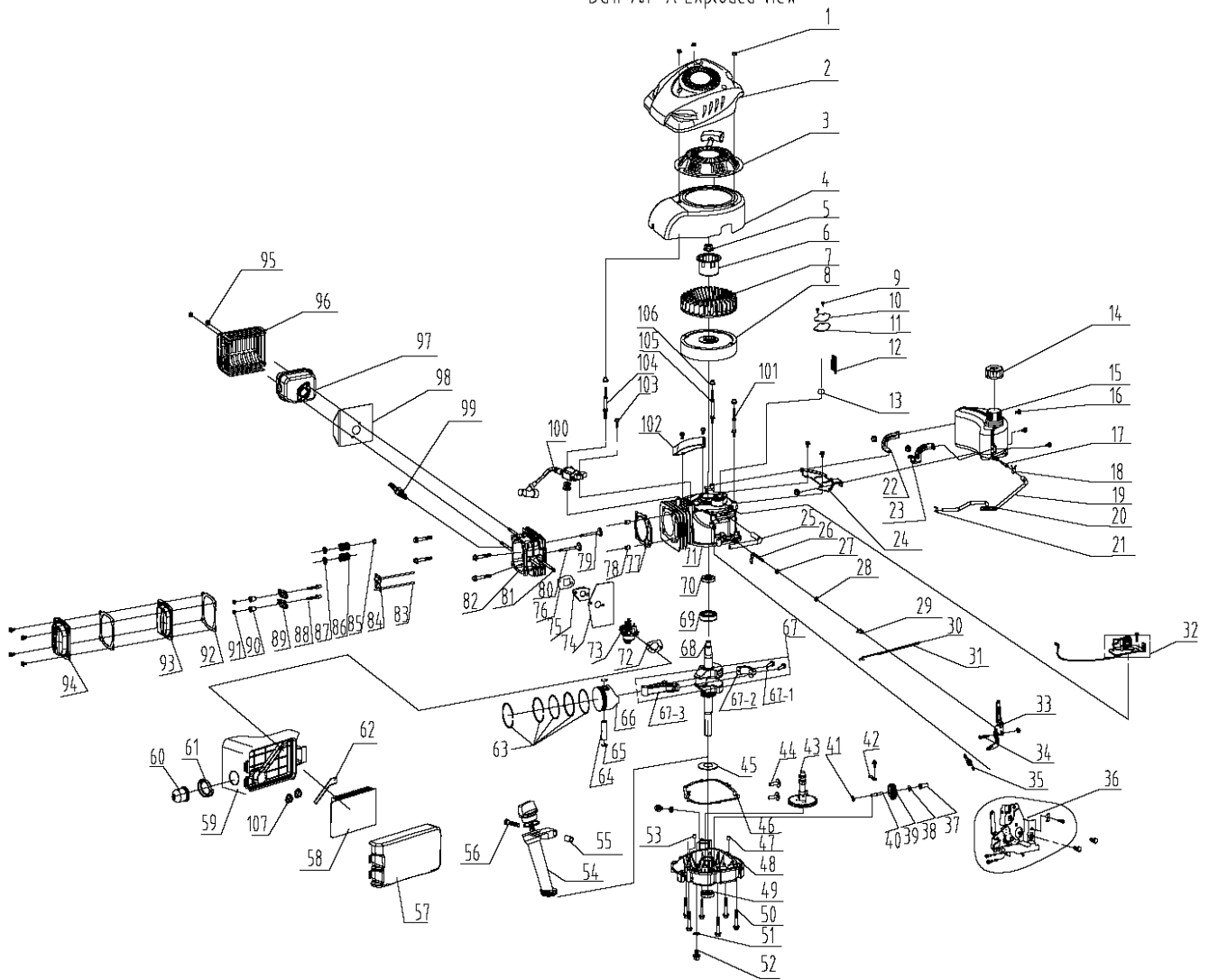


# ENGINE DG1P73F-A

DG1P70F-A Exploded view



DG1P73F-A				
ITEM	PART NUMBER	DESCRIPTION	INTERNAL CODE	QTY PER PRODUCT
1	CLGBT6177M6	NUT M6	GB/T6177/M6	7
2	CLD13010030	COVER	D13010030	1
3	CLD11010042	Starter	D11010042	1
4	CLD13010220	VOLUTE	D13010220	1
5	CLGBT6177M14	MAGNETIC WHEEL NUT	GB/T6177/M14	1
6	CLD11020021	Start drum	D11020021	1
7	CLD13010210	FAN	D13010210	1
8	CLD12010560	MAGNETIC WHEEL	D12010560	1
9	CLGBT5789M6X12	Hex flang boltM6X12 M6X12	GB/T5789/M6X12	9
10	CLD11030072	COVER D AERATEUR	D11030072	1
11	CLD13040270	JOINT COVER	D13040270	1
12	CLD16020010	Oil filter	D16020010	1
13	CLD13050170	VALVE	D13050170	1
14	CLD13020180	Tank cover	D13020180	1
15	CLD13020030	FUEL TANK	D13020030	1
16	CLGBT5789M6X16	Hex flang boltM6X16 M6X16	GB/T5789/M6X16	9
17	CLD13050110	Fuel filter	D13050110	1
18	CLD11040090	Vitta nip B	D11040090	1
19	CLD13050190	PIPE	D13050190	1

<b>DG1P73F-A</b>				
<b>ITEM</b>	<b>PART NUMBER</b>	<b>DESCRIPTION</b>	<b>INTERNAL CODE</b>	<b>QTY PER PRODUCT</b>
20	CLD11030211	Vitta nip C	D11030211	1
21	CLD11040080	Vitta nip A	D11040080	1
22	CLD11030401	SUPPORT RIGHT	D11030401	1
23	CLD11030391	SUPPORT LEFT	D11030391	1
24	CLD11030421	MAIN SUPPORT	D11030421	1
25	CLD13050010	Exhaust pipe	D13050010	1
26	CLD12010206	Lock shaft speed	D12010206	1
27	CLGBT966X12X1	WasherØ6x12x1 Ø6x12x1	GB/T96/6X12X1	1
28	CLD13040090	Speed control rod seal6X11X4 6X11X4	D13040090	1
29	CLD21070081	B form split cotters	D21070081	1
30	CLD11040160	LEVER	D11040160	1
31	CLD11040130	Spring	D11040130	1
32	CLD11030431	ENGINE BRAKE MECHANISM	D11030431	1
33	CLD11030281	Speed rocker arm	D11030281	1
34	CLD16020030	Speed adjustment bolt	D16020030	1
35	CLD12040230	Speed adjustmet tension spring	D12040230	1
36	CLD11030272	Speed governing device assembly	D11030272	1
37	CLD13050130	Slide bushing	D13050130	1
38	CLGBT9663X15X05	JOINT	GB/T96/63X15X0.5	1
39	CLD13050070	Gear set	D13050070	1
40	CLD12010550	Governor gear shaft	D12010550	1
41	CLGBT966X12X15	WasherØ6x12x1.5 Ø6x12x1.5	GB/T96/6X12X1.5	3
42	CLD11030206	PLATE	D11030206	1
43	CLD13050160	CAM	D13050160	1
44	CLD12010310	Tappet	D12010310	2
45	CLD16020040	CALE	D16020040	1
46	CLD13040260	JOINT BASE	D13040260	1
47	CLD12010290	Cabinet pinsØ8X14 Ø8X14	D12010290	1
48	CLD12020180	LOWER MOTOR COVER	D12020180	1
49	CLD13040050	SEAL	D13040050	1
50	CLGBT5789M8X50	Hex flang boltM8X50 M8X50	GB/T5789/M8X50	10
51	CLGBT96D10X15X2	SEAL WASHER	GB/T96/D10X15X2	2
52	CLGBT5789M10X15	DRAIN	GB/T5789/M10X15	2
53	CLD12010610	PLOT CENTERING	D12010610	1
54	CLD13010120	Fueler assy	D13010120	1
55	CLD13010140	Fueler spacer	D13010140	1
56	CLGBT5789M6X55	SCREW M6x55	GB/T5789/M6X55	1
57	CLD13010154	Filter cover	D13010154	1
58	CLD13010157	Paper filter	D13010157	1
59	CLD13010155	Filter base	D13010155	1
60	CLD13020190	Add pump	D13020190	1
61	CLD13010160	Add pump button	D13010160	1
62	CLD13010156	Filter tube	D13010156	1
63	CLD11040040	GAME SEGMENT	D11040040	1
64	CLD12010600	PISTON PIN	D12010600	1
65	CLD11040200	CLIPS PISTON	D11040200	2
66	CLD12020210	PISTON	D12020210	1
67	CLD12020190	ROD	D12020190	1

<b>DG1P73F-A</b>				
<b>ITEM</b>	<b>PART NUMBER</b>	<b>DESCRIPTION</b>	<b>INTERNAL CODE</b>	<b>QTY PER PRODUCT</b>
68	CLD12010110	VIELBREQUIN	D12010110	1
69	CLD12010330	Bearing6205 6205	D12010330	1
70	CLD13040040	Oil seal25X38X7 25X38X7	D13040040	1
71	CLD12020200	ENGINE BLOCK NU	D12020200	1
72	CLD13040340	AIR FILTER PAPER PAD	D13040340	1
73	CLD12040040	CARBURETOR	D12040040	1
74	CLD13040240	HEAT SEAL	D13040240	1
75	CLD13040230	JOINT	D13040230	1
76	CLD13010130	Intake pipe	D13010130	1
77	CLD13040150	HEAD GASKET	D13040150	1
78	CLD12010300	PinØ10X16 Ø10X16	D12010300	2
79	CLD12010150	VALVE INLET	D12010150	1
80	CLD12010180	VALVE EXHAUST	D12010180	1
81	CLD12010350	Double armed bolt M6X94 M6X94	D12010350	4
82	CLD12020100	HEAD	D12020100	1
83	CLD12010590	Tappet	D12010590	2
84	CLD11030051	PUSH PLATE VALVE	D11030051	1
85	CLD11030370	VALVE	D11030370	1
86	CLD11040070	VALVE SPRING	D11040070	2
87	CLD12010230	Valve spring retainer	D12010230	2
88	CLD12010470	Bolt	D12010470	2
89	CLD12010220	Rockers	D12010220	2
90	CLD12010510	Nut	D12010510	2
91	CLD12010490	Nut	D12010490	2
92	CLD13040190	Cylinder gasket	D13040190	2
93	CLD11020051	COVER 1	D11020051	1
94	CLD11020061	COVER 2	D11020061	1
95	CLGBT6187	nut	GB/T6187	2
96	CLD11010072	GRID POT MUFFLER	D11010072	1
97	CLD11010083	EXHAUST SYSTEM	D11010083	1
98	CLD13040210	Insulation board of muffler	D13040210	1
99	CLD16010070	SPARK PLUG	D16010070	1
100	CLD13050210	BIOBINE IGNITION	D13050210	1
101	CLD12010570	GOUJEON	D12010570	1
102	CLD11030411	DEFLECTEUR	D11030411	1
103	CLGBT5789M6X25	BOLT CLAMP	GB/T5789/M6X25	1
104	CLD12010580	STUD	D12010580	1
105	CLD12010640	STUD	D12010640	1
106	CLD12010450	SPACER	D12010450	3
107	CLGBT6183M6	NUT	GB/T6183/M6	2

maj26022015