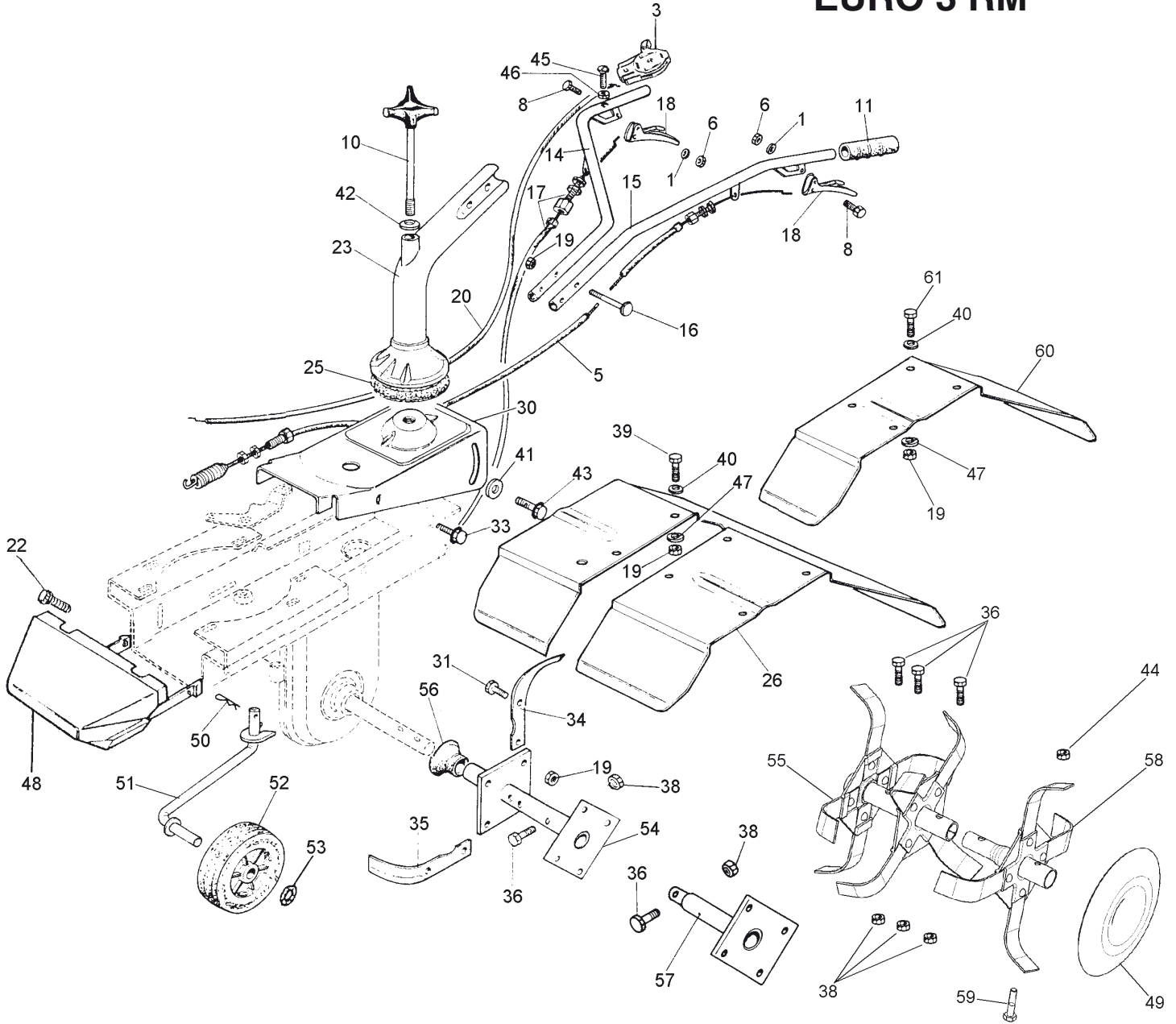




eurosystems

**MOTOZAPPA
MOTORHOE
MOTOBINEUSE
MOTORHACKE**

EURO 3 RM



1	84.3605.010	25	23.1005.906	49	36.0015.213 ▲	Fino alla matricola Up to serial no. Bis zur seriennummer Jusqu'à la matricule
3	32.1010.920	26	26.0010.264	50	85.1486.000	
-	32.1010.930 □	30	26.0005.253	51	26.0012.207	Δ ← 513564 ← 967642
5	26.0010.340	31	86.2669.000	52	26.0050.901	
6	81.4530.080	33	86.2494.000	53	84.3993.080	Dalla matricola From serial no. Ab der seriennummer A partir de la matricule
8	26.0010.216	34	26.0015.210 Δ	54	26.0015.240 Δ	
10	26.0010.259	35	26.0015.211 Δ	55	36.0015.280 DX ▲	▲ → 513565 → 967643
11	26.1010.900	36	86.3427.000	-	36.0015.282 SX ▲	
14	26.0010.302 DX	38	81.4642.000	56	26.1015.900	MOD. 30
15	26.0010.262 SX	39	86.2555.000	57	26.0015.243 Δ	
16	86.2787.000	40	84.3685.000	58	36.0015.290 DX ▲	23 26.0010.277 26 26.0005.412 30 26.0005.414 60 26.0005.444 DX - 26.0005.443 SX - 26.0005.445 SX
17	26.0010.316 ←←	41	84.3711.000	-	36.0015.292 SX ▲	
-	26.0050.258 ←←	42	84.3901.050	59	86.3430.000	
-	26.0050.285 ←←	43	86.2685.000	60	26.0005.442 DX	
19	81.4588.000	44	81.4645.000	-	26.0005.443 SX	
20	26.0050.220	45	86.2356.100	61	86.2546.000	
-	32.1010.332 Loncin	46	81.4548.000			
22	26.0050.219	47	84.3708.000			
23	26.0010.256	48	26.0005.215			

□ HONDA

