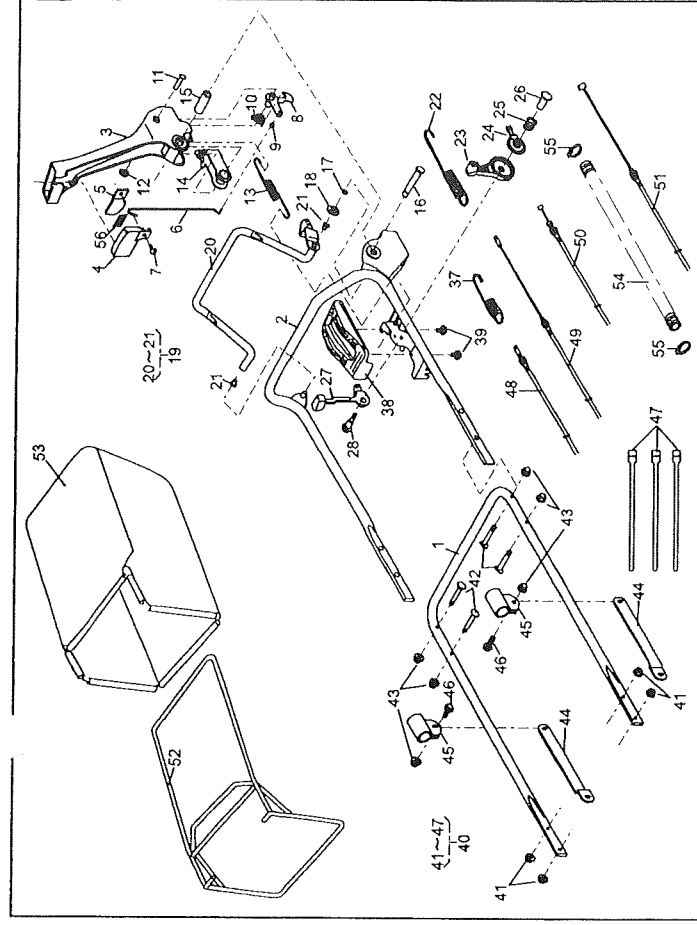


PARTS LIST

P/L No. 46014-476-00

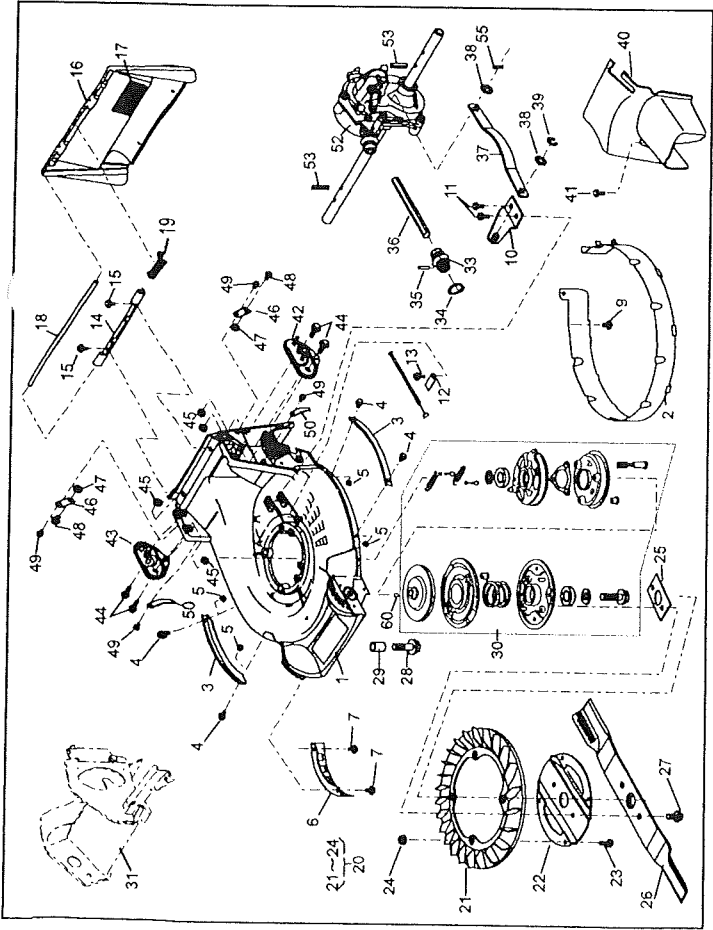
REF. No.	PARTS No.	PARTS NAME	HANDLE-PrO		RECOMM.(%)	REMARKS
			QTY INCLUDING	PRICE ()		
1	51027	HANDLE	1		1/2	
2	51027	HANDLE	1			
3	11095	LEVER(BBC)	1			
4	36110	BUTTON	1			
5	11049	SLIDE PLATE	1			
6	64014	SHAFT	1			
7	376N	(+)TRUSS SCREW	1			
8	71203	ARM C.P.	1			
9	76007	BUSH	1			
10	68013	SPRING	1			
11	31056	GB-HEADED PIN	1			
12	576V	PUSH NUT	1			
13	68013	SPRING	1			
14	11109	LINK	1			
15	61023	SLEEVE	1			
16	64014	SHAFT	1			
17	812V	C-SNAP RING	1			
18	613L	PLAIN WASHER	1			
19	7116T	LEVER ASSY	1			
20		LEVER	1			
21	76007	BUSH	1			
22	68013	SPRING	2			
23	91010	THRUST LEVER(GXV120/GXV160)	1			
24	61003	THRUST PLATE	1			
25	68013	SPRING	1			
26	31058	HEXAGON NUT	1			
27	11095	LEVER	1			
28	31062	PRE-COAT LOCK BOLT	1			
29						
30						



PARTS LIST

P/L No. 46014-475-00

REF. No.	PARTS No.	PARTS NAME	HANDLE-PrO		RECOMM.(%)	REMARKS
			QTY INCLUDING	PRICE ()		
31					2/2	
32						
33						
34						
35						
36						
37	68013	SPRING	1			
38	71900	COVER ASSY	1			
39	470L	(+)TAPPING SCREW	2			
40	71900	BOLT SET	1			
41	569L	FLANGE NYLON NUT	4			
42	31057	HEXAGON BOLT	4			
43	583L	FLANGE CAP NUT	6			
44	71900	BAR SET	1			
45	11012	HANGER BAND	2			
46	31057	HEXAGON BOLT	2			
47	68028	WIRE BAND	3			
48	91003	CONTROL CABLE	1			
49	91003	CONTROL CABLE	1			
50	91001	THROTTLE WIRE(GXV120/GXV160)	1			
51	91003	CONTROL CABLE(BBC)	1			
52	11062	FRAME C.P.	1			
53	36098	GRASS BAG C.P.(LAWN FLITE)	1			
54	41003	TUBE (15.6x80L)	1			
55	68028	WIRE BAND	2			
56	36080	RUBBER SHEET	1			
57						
58						
59						
60						

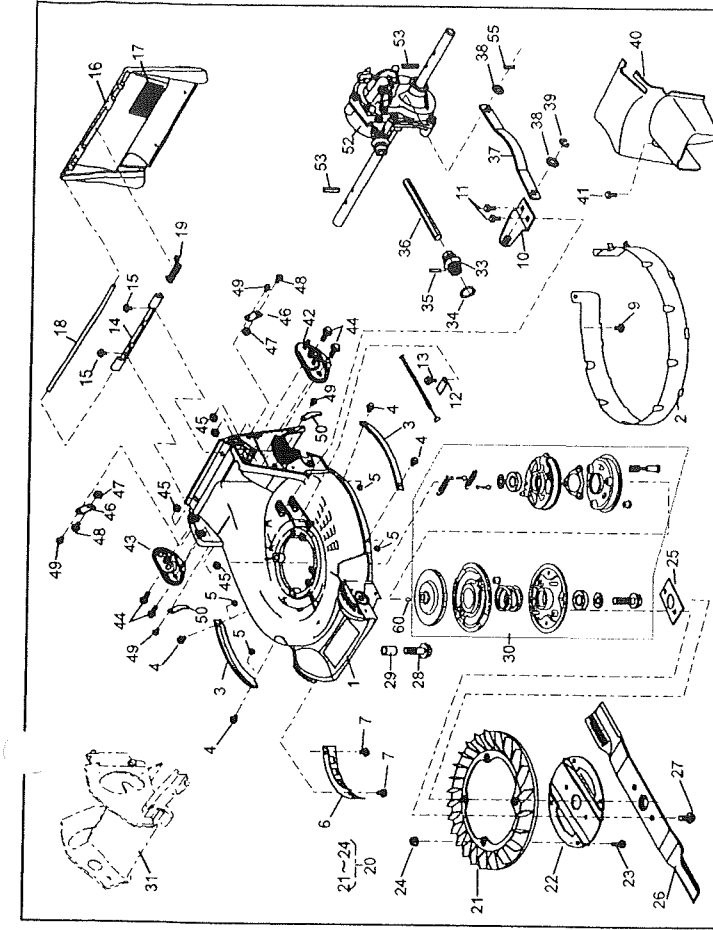


PARTS LIST

REF. No.	PARTS No.	PARTS NAME	GARSS-CUTTING-PRO		RECOMM.(%)	REMARKS
			QTY INCLUDING	PRICE ()		
1	51043 151 42	HOUSING	1		1/2	
2	36068 1 204	GUARD	1			
3	51090 117 09	PROTECTOR	2			
4	335L 0616	FLANGE BOLT	4			
5	512L 0600	HEXAGON NUT	4			
6	36065 1 180	COVER	1			
7	342L 0612	FLANGE BOLT TAPPING	2			
8						
9	342L 0612	FLANGE BOLT TAPPING	1			
10	11006 155	STAY C.P.	1			
11	342L 0612	FLANGE BOLT TAPPING	2			
12	11113 407 1	STAY	1			
13	342L 0612	FLANGE BOLT TAPPING	1			
14	11113 292 1	STAY	1			
15	342L 0612	FLANGE BOLT TAPPING	2			
16	36068 1 96 46	GUARD	1			
17	36080 1 748	RUBBER SHEET	1			
18	64014 324 1	SHAFT	1			
19	68013 336	SPRING	1			
20	71082 111	FAN ASSY	1			
21	51125 1 103	FAN	1			
22	11102 151	HOLDER	1			
23	31062 169	PRE-COAT LOCK BOLT	4			
24	579L 0600	FLANGE NUT	4			
25	61024 208	SPACER	1			
26	91014 188	BLADE	1			
27	31057 1 197 1	HEXAGON BOLT	2			
28	31057 243	HEXAGON BOLT	4			
29	61024 142	SPACER	3			
30	71067 1 106 1	BRAKE ASSY	1			

P/L No. 46014-538-00

NOTE

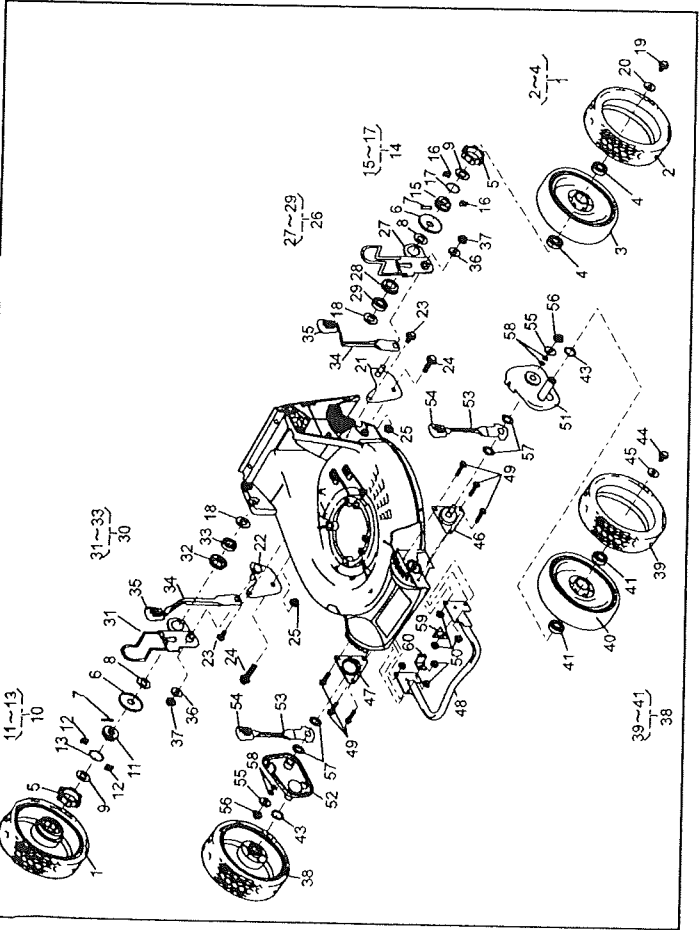


PARTS LIST

REF. No.	PARTS No.	PARTS NAME	GARSS-CUTTING-PRO		RECOMM.(%)	REMARKS
			QTY INCLUDING	PRICE ()		
31		COVER UNIT (Ref. P/L No. 46012-550-*)			2/2	Dec. 25, 2006
32						
33	91097 1 101	UNIVERSAL JOINT	1			
34	812V 2000	C-SNAP RING FOR SHAFT	1			
35	717B 0419	PARALLEL PIN	1			
36	64014 339 1	SHAFT	1			
37	91049 1 29	CONNECTOR	1			
38	68036 280	WASHER	2			
39	816V 0800	E-SNAP RING	1			
40	36065 438	COVER	1			
41	342L 0616	FLANGE BOLT TAPPING	1			
42	51116 149 1	HANDLE BRACKET(L)	1			
43	51116 150	HANDLE BRACKET(R)	1			
44	31057 255	HEXAGON BOLT	4			
45	512L 0800	HEXAGON NUT	4			
46	11113 403	STAY	2			
47	512L 0800	HEXAGON NUT	2			
48	31057 181 1	HEXAGON BOLT	2			
49	342L 0612	FLANGE BOLT TAPPING	4			
50	11113 415	STAY	2			
51						
52	71008 377	GEAR CASE ASSY	1			
53	711V 0522	SPRING PIN	2			
54						
55	733L 1000	SNAP PIN	1			
56						
57						
58						
59	122039	ENGINE HONDA GXV160H2-SFL1-R280	1			
60		WOOD RUFF KEY	1			

P/L No. 49014-538-00

NOTE



PARTS LIST

REF. No.	PARTS No.	PARTS NAME	9.67A-WHEEL		RECOMM.(%) Lot.100	REMARKS
			QTY INCLUDING	PRICE ()		
1	71041 144	WHEEL ASSY(9.67A.W.)	2		1/2	
2	91086 116	TIRE	2			
3		WHEEL	2			
4	916B 6002	BEARING	2			
5	11086 119	STOPPER	4			
6	61003 112	THRUST PLATE	2			
7	31034 137	PIN	2			
8	60036 270	WASHER	2			
9	60036 146	WASHER	2			
10	71158 101	RATCHET ASSY(R)	1			
11	11102 138	HOLDER	1			
12	31034 170	PIN	2			
13	68013 266	SPRING	1			
14	71158 102	RATCHET ASSY(L)	1			
15	11102 138	HOLDER	1			
16	31034 170	PIN	2			
17	68013 266	SPRING	1			
18	60036 275	WASHER	2			
19	31057 181	HEXAGON BOLT	2			
20	68036 101	WASHER	2			
21	11006 151	STAY C.P.(FL)	1			
22	11006 152	STAY C.P.(RR)	1			
23	342L 0612	FLANGE BOLT TAPPING	2			
24	31057 255	HEXAGON BOLT	2			
25	584L 0800	U-FLANGE NUT	2			
26	71122 110	ADJUSTER ASSY(L)	1			
27	11142 125	ADJUSTER (RL)	1			
28	11102 125	HOLDER	1			
29	916B 6202	BEARING	1			
30	71122 111	ADJUSTER ASSY(R)	1			

PARTS LIST

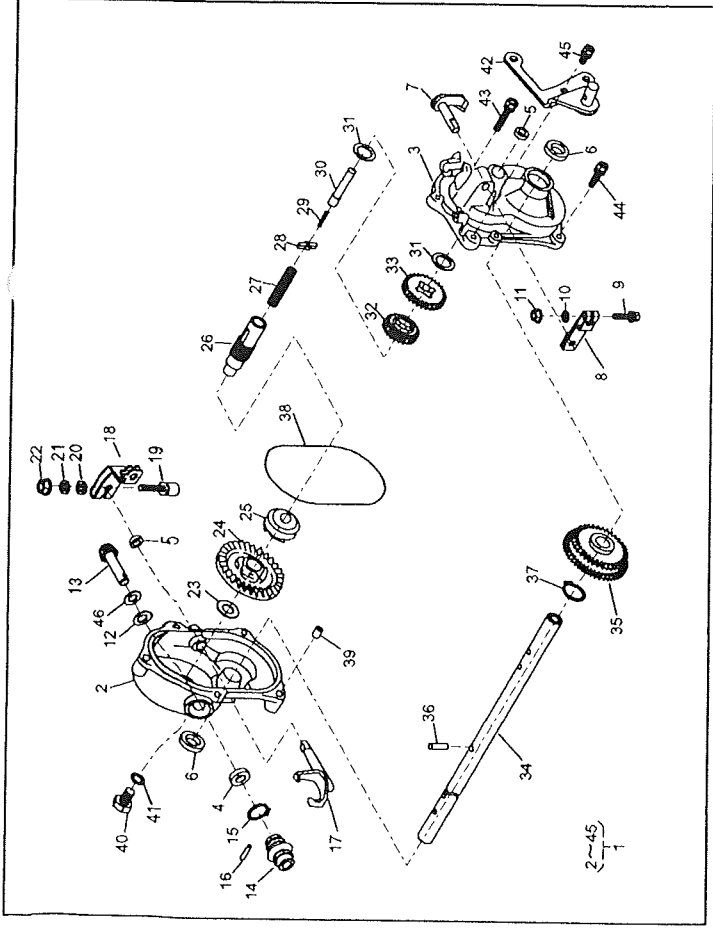
REF. No.	PARTS No.	PARTS NAME	9.67A-WHEEL		RECOMM.(%) Lot.100	REMARKS
			QTY INCLUDING	PRICE ()		
31	11142 126	ADJUSTER(RR)	1		2/2	
32	11102 228	HOLDER	1			
33	916B 6202	BEARING	1			
34	11150 105 09	ADJUST LEVER	2			
35	36051 121	KNOB	2			
36	613L 10800	WASHER	2			
37	569L 0800	FLANGE NYLON NUT	2			
38	71041 145	WHEEL ASSY(9.67A.W.)	2			
39	91086 116	TIRE	2			
40		WHEEL	2			
41	916B 6002	BEARING	2			
42			4			
43	51113 119	RING	2			
44	31057 181	HEXAGON BOLT	2			
45	68036 101	WASHER	2			
46	11006 153	STAY C.P.(FL)	1			
47	11006 154	STAY C.P.(RR)	1			
48	11153 112	BUMPER	1			
49	335L 0625	FLANGE BOLT	6			
50	569L 0600	FLANGE NYLON NUT	6			
51	11142 127	ADJUSTER(FL)	1			
52	11142 128	ADJUSTER(RL)	1			
53	11150 109 09	ADJUST LEVER	2			
54	36051 121	KNOB	2			
55	68036 101	WASHER	2			
56	584L 0800	U-FLANGE NUT	2			
57	68013 333	SPRING	4			
58	68007 105	SHIM	0-4			
59	11113 1418	STAY(L)	1			
60	11113 1417	STAY(R)	1			

P/L No. 46014-504-00

P/L No. 46014-504-00

NOTE

NOTE

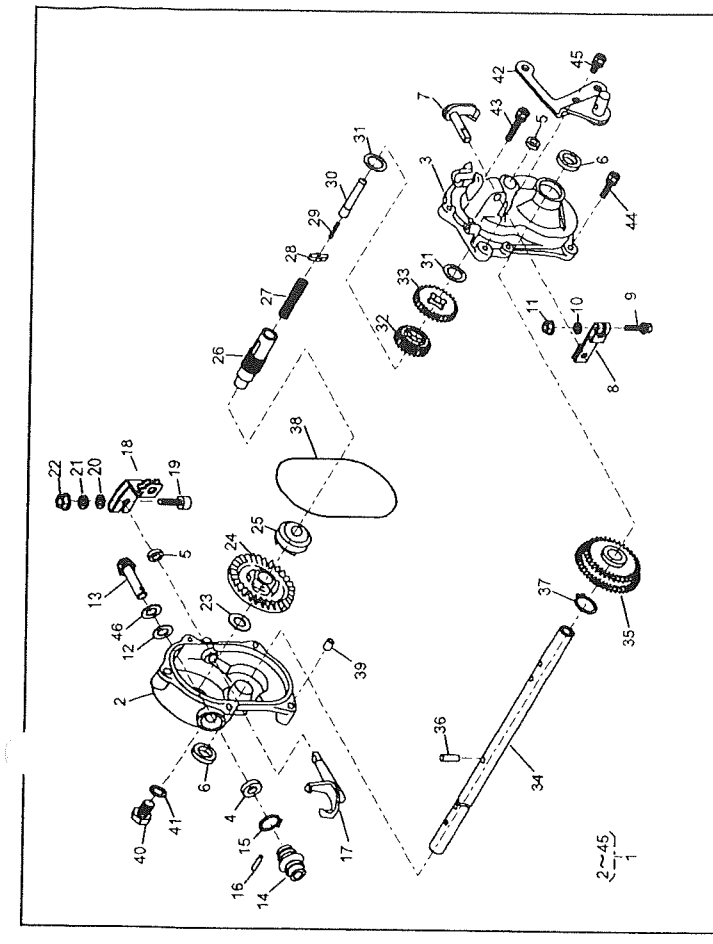


PARTS LIST

GEAR CASE ASSY (71008-377)

P/L No. 46014-264-02

REF. No.	PARTS No.	PARTS NAME	GEAR CASE		RECOMM.(%)	REMARKS
			QTY INCLUDING	PRICE ()		
	1	71008 377	1		1/2	Dec.25, 2006
	2	51001 195	1			
	3	51001 196	1			
	4	61002 161	1			
	5	61002 162	2			
	6	61002 163	2			
F	7	64024 104	1			
	8	11104 119	1			
F	9	320L 0925	1			
	10	611L 0500	1			
	11	571L 0500	1			
	12	61003 109	1			
	13	78003 130	1			
	14	91097 101	1			
F	15	812V 2000	1			
	16	717B 0418	1			
	17	11097 105	1			
E	18	11104 137	1			
	19	418U 0630	1			
	20	611L 0600	1			
	21	681L 0600	1			
	22	512L 0600	1			
	23	61024 117	1			
	24	78001 162	1			
	25	11129 107	1			
	26	64014 236	1			
	27	68013 262	1			



PARTS LIST

GEAR CASE ASSY (71008-377)

P/L No. 46014-264-02

REF. No.	PARTS No.	PARTS NAME	GEAR CASE		RECOMM.(%)	REMARKS
			QTY INCLUDING	PRICE ()		
	28	31034 171	1		2/2	Dec.25, 2006
	29	738U 10320	1			
	30	64014 235	1			
	31	61024 118	2			
	32	78004 155	1			
	33	78004 155	1			
	34	64014 344	1			
	35	78012 107	1			
	36	31034 150	1			
F	37	812V 2200	1			
	38	214B 11000	1			
	39	11083 201	2			
	40	31057 262	1			
	41	68001 110	1			
	42	11006 157	1			
Z	43	315L 0625	3			
	44	315L 0635	1			
	45	318L 0612	2			
	46	68007 132	0+2			

