



Green Passion

Illustrated Parts List

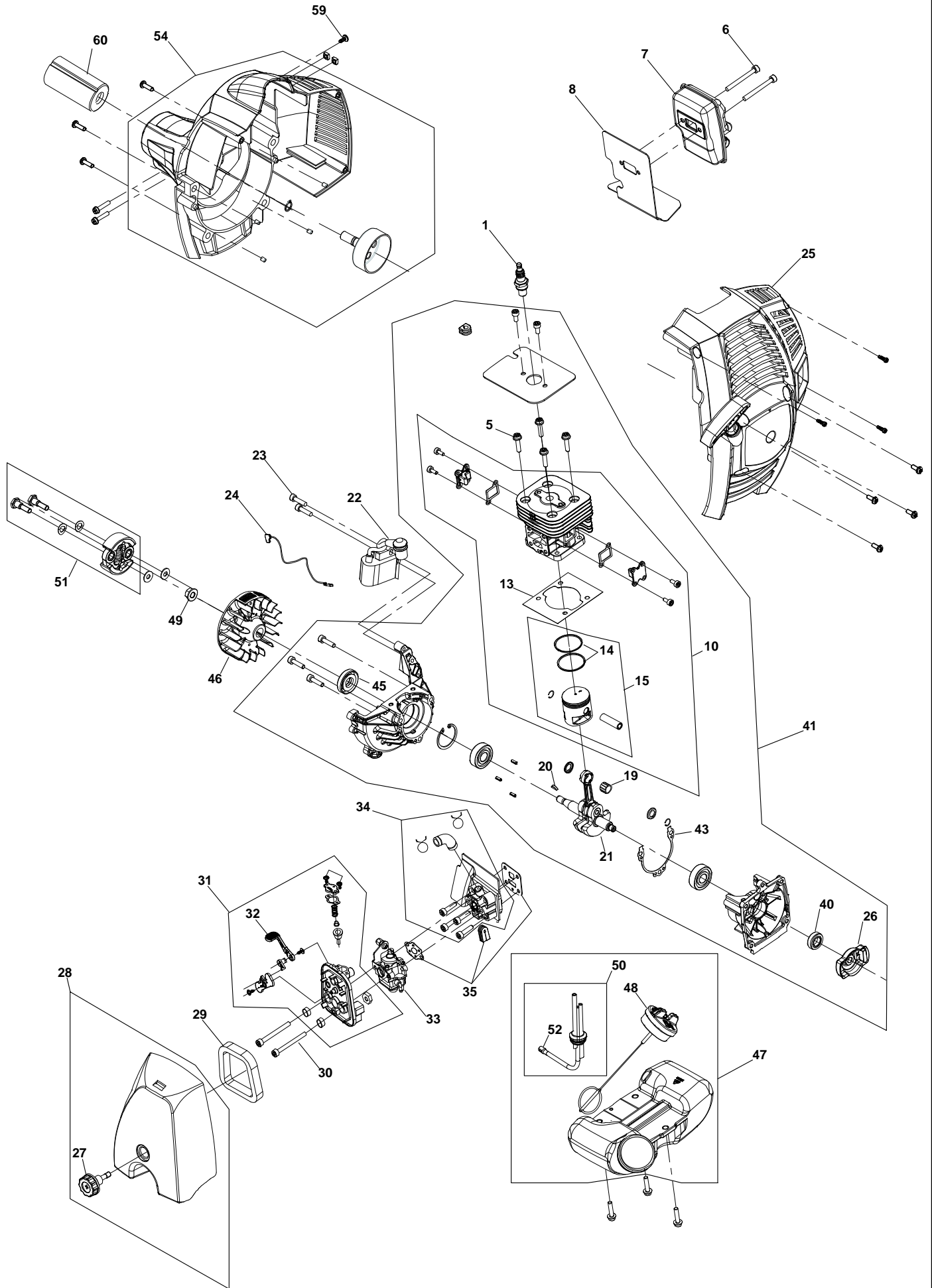
XB 32 D - Model Year 2008

- Use GLOBAL GARDEN PRODUCT Genuine Spare Parts specified in the parts list for repair and/or replacement.
- The contents described in the parts list may change due to improvement.
- The drawings of the spare parts are only indicative and might not represent the part in question exactly.
- The indications "right" - "left" - "front" - "rear" refer to the position of the operator when using the machine.
- When placing orders of parts for repair and/or replacement, make sure that the illustrated parts list is the one applying to the machine's year of manufacture, as shown on the identification plate attached to the machine.

COPYRIGHT by GLOBAL GARDEN PRODUCTS

All rights reserved. No part of this material may be reproduced or transmitted, in any form or by any means, electronic or mechanical, including photocopying, recording or by any information storage and retrieval system, without permission in writing from GLOBAL GARDEN PRODUCTS.

Engine





XB 32 D - Model Year 2008

Engine

| Pos. | Part no. | Q.ty | Description | Remarks |
|------|-------------|------|-------------------------|---------|
| 1 | 23051000/0 | 1 | Spark Plug | |
| 5 | 123878049/0 | 1 | Screw | |
| 6 | 123878050/0 | 1 | Screw | |
| 7 | 183740005/0 | 1 | Muffler | |
| 8 | 123280025/0 | 1 | Gasket | |
| 10 | 183070004/0 | 1 | Cylinder - Piston Ass'Y | |
| 13 | 123280026/0 | 1 | Cylinder Gasket | |
| 14 | 123204005/0 | 2 | Piston Ring | |
| 15 | 183590004/0 | 1 | Piston Ass' Y | |
| 19 | 123072001/0 | 1 | Needle Bearing | |
| 20 | 123072000/0 | 1 | Flywheel Key | |
| 21 | 123020019/0 | 1 | Flywheel Key | |
| 22 | 123044007/0 | 1 | Electr. Coil | |
| 23 | 123878051/0 | 1 | Screw | |
| 24 | 123065033/0 | 1 | Spark Plug Cable | |
| 25 | 183037002/0 | 1 | Starter Assy Red | |
| 26 | 123082001/0 | 1 | Starter Cup | |
| 27 | 123593505/0 | 1 | Knob | |
| 28 | 183090003/0 | 1 | Filter Cover, Yellow | |
| 28 | 183090004/0 | 1 | Filter Cover, Red | |
| 29 | 123220008/0 | 1 | Air Filter | |
| 30 | 123878052/0 | 1 | Screw | |
| 31 | 383781001/0 | 1 | Air Filter Holder | |
| 32 | 123315077/0 | 1 | Choke Lever | |
| 33 | 123054021/0 | 1 | Carburettor | |
| 34 | 383073501/0 | 1 | Intake Manifold Assy | |
| 35 | 183303511/0 | 1 | Gasket Ass' Y | |
| 40 | 119035154/0 | 1 | Seal Ring | |
| 41 | 183275302/0 | 1 | Engine Short Block | |
| 43 | 123280027/0 | 1 | Crankcase Gasket | |
| 45 | 112020001/0 | 1 | Seal Ring | |
| 46 | 183880004/0 | 1 | Flywheel Ass.Y | |
| 47 | 183733004/0 | 1 | Kit Fuel Tank | |
| 48 | 123790016/0 | 1 | Fuel Cap Assy | |
| 49 | 123120004/0 | 1 | Nut | |
| 50 | 383240001/0 | 1 | Grommet Assy | |
| 51 | 183215003/0 | 1 | Clutch Ass.Y | |
| 52 | 183520001/0 | 1 | Intake Filter | |
| 54 | 383785002/0 | 1 | Support Trasm.Assy, Red | |
| 59 | 6980624 | 1 | Screw | |
| 60 | 123275020/0 | 1 | Grommet | |



XB 32 D - Model Year 2008

Handle-transmission

| Pos. | Part no. | Q.ty | Description | Remarks |
|------|-------------|------|-------------------------|---------|
| 1 | 383869063/0 | 1 | Transmission Pipe Ass.Y | |
| 2 | 123020021/0 | 1 | Transm.Shaft Ass.Y | |
| 3 | 123170002/0 | 1 | Spacer | |
| 6 | 183065017/0 | 1 | Cables Ass.Y + Sheath | |
| 7 | 123700056/0 | 1 | Right Handgrip | |
| 8 | 123700057/0 | 1 | Left Handgrip | |
| 9 | 123430579/0 | 1 | Spring | |
| 10 | 123315078/0 | 1 | Throttle Lever | |
| 11 | 6980206 | 1 | Stop Switch | |
| 12 | 383780001/0 | 1 | Harness Support Ass.Y | |
| 13 | 123046004/0 | 1 | Harness | |
| 16 | 383820505/0 | 1 | Gear Case Assy | |
| 18 | 183394006/0 | 1 | Handle Ass.Y | |
| 19 | 123395051/0 | 1 | Left Handgrip | |
| 21 | 383465005/0 | 1 | Safety Cover Ass.Y | |
| 25 | 383820504/0 | 1 | Cutting Line Assy | |
| 26 | 123070009/0 | 1 | Nylon Head Key | |
| 27 | 123155006/0 | 1 | 4 Teeth Disck | |
| 28 | 383303512/0 | 1 | Parts Bag | |
| 29 | 6980307 | 1 | Collar | |
| 30 | 6980308 | 1 | Upper Ring Nut | |
| 31 | 6980312 | 1 | Stabilizer | |